

Installation Instructions

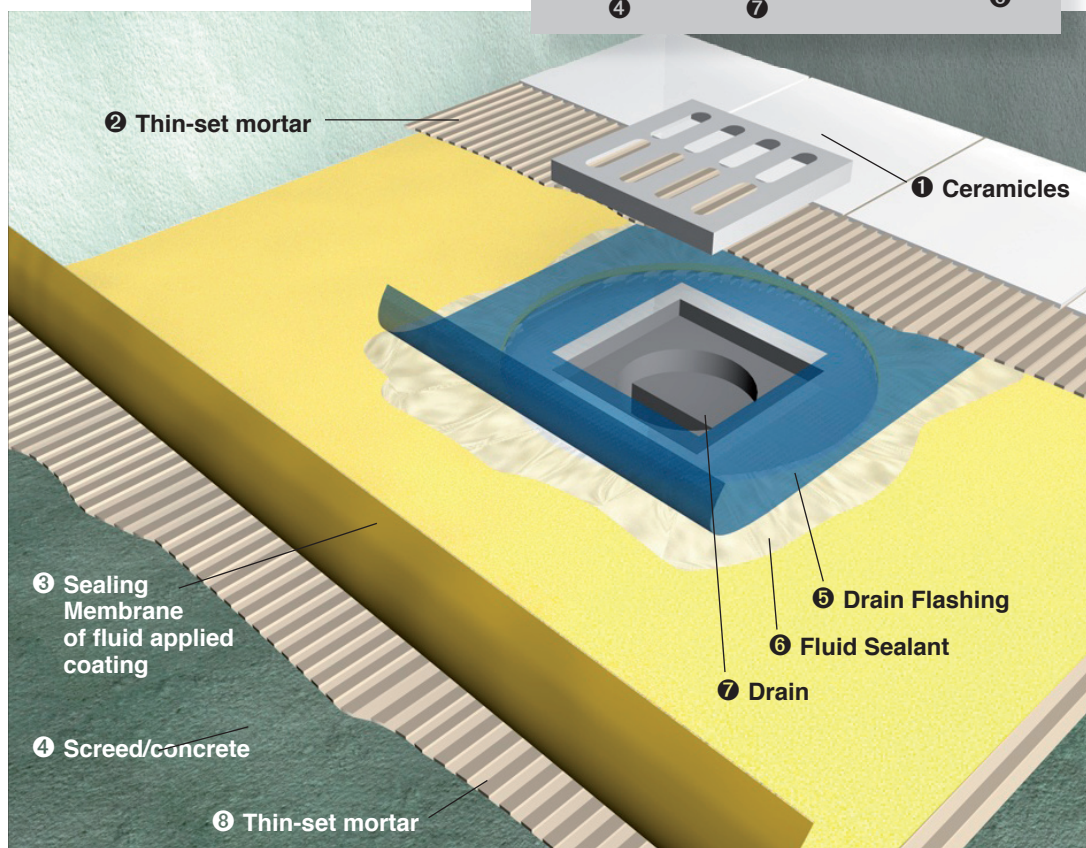
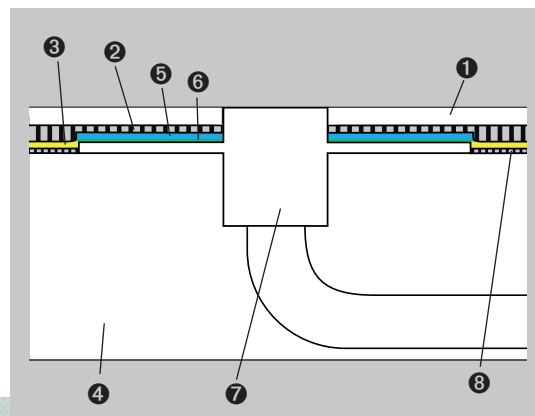
Drain Flashing

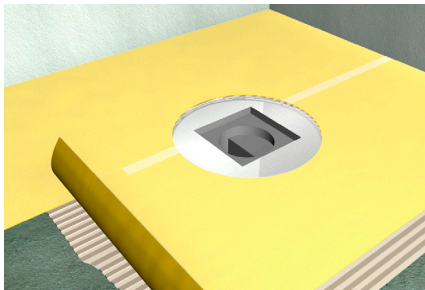
Product description

- Waterproof flashing for sealing around drains

General

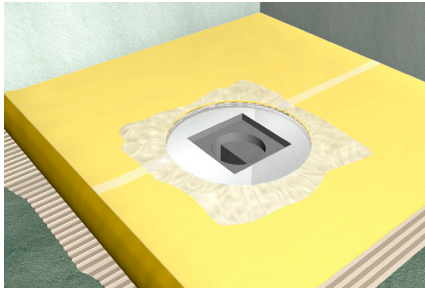
- The floor should be waterproof with a suitable sealing membrane/sheet or fluid applied coating





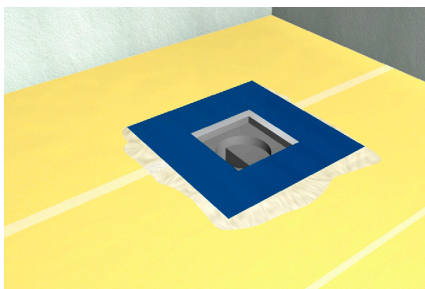
Step 1

- The floor must be waterproofed with a suitable sealing membrane/sheet or fluid applied coating.



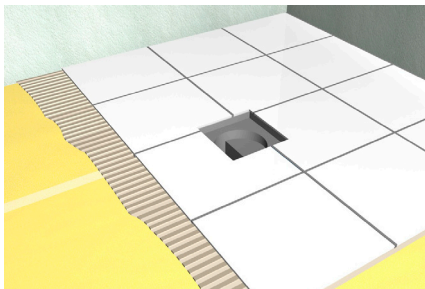
Step 2

- Apply generously a fluid sealant (quality according to specification) around the drain with a 5/32" x 5/32" (4 mm x 4 mm) tooth trowel.



Step 3

- Embed the flashing into the still uncured fluid sealant with soft pressure.
- Avoid wrinkles and air pockets.
- Remove excess sealant to the edges.



Step 4

- Tiling can start according to tile manufacturers instructions.

The above technical data represent average values. The technical information and application instructions are based on our experience and present knowledge. However, it is each users own responsibility to make trials with the original substrates in order to verify the suitability of our products for the intended purpose, taking into consideration all application related parameters. Please contact us if you have any further questions.